



Color: Dark Bronze
Installer: NPE

NRM-1000 PANELS • Narrow Rib Clip System

NRM-1000 is an architectural metal roofing system available exclusively from Nu-Ray Metal Products. It is intended for applications over a solid substrate with a minimum 3:12 roof pitch. Typical substrates include plywood, nailboard insulation or equivalent. Panels are factory roll-formed in continuous lengths. Maximum panel length is 58' 0". Minimum panel length is 2' 6".

NRM-1000 roof panels feature a concealed attachment clip system to allow thermal movement as panels expand and contract with temperature changes. With its custom design, the clip insures an extra-snug fit. The one-piece design of the NRM-1000 clip makes installation easy.

FASTENERS

For roofing applications, use wood-type screws fastened on 18" centers. Other screw types are available applications over structural steel and steel decking.

TRIM

All flashing and trim shall be fabricated by Nu-Ray Metals or a qualified fabricator. Flashings for this panel are 26 or 24 gauge steel.

INSTALLATION

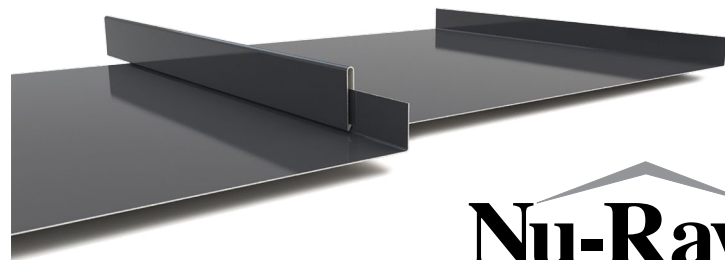
For roofing applications, Nu-Ray's snap-lock panels shall be installed over solid decking ($\frac{5}{8}$ " plywood, nailboard insulation or equivalent) with an underlayment of 30# (minimum) roofing felt applied horizontally from eave to ridge. Panels shall be fastened on 18" centers (maximum). Minimum roof pitch is 3:12.

HANDLING

Vinyl masking is provided on all steel sheet to help protect materials where extra handling is expected.

WARRANTY

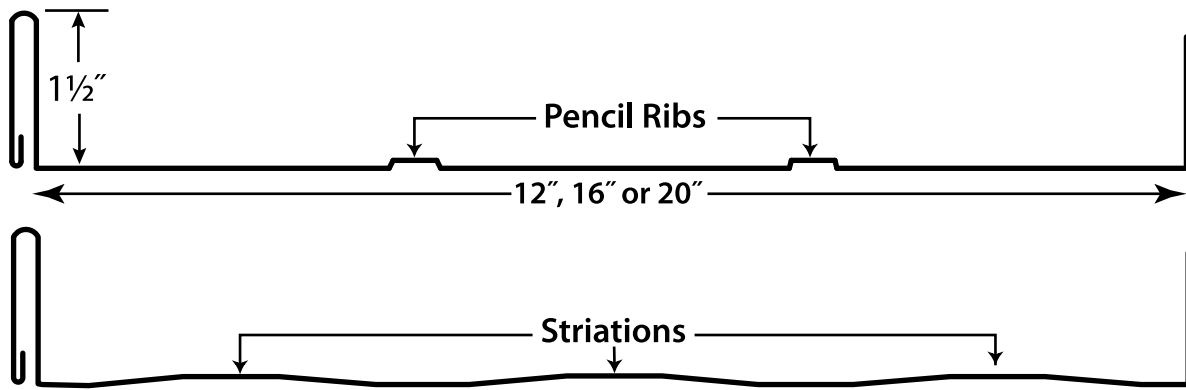
A 40-year non-prorated finish warranty can be supplied covering finish performance.



Nu-Ray Metals
Steel Roofing & Siding Products

Nu-Ray Metal Products, Inc. 1234 37th Street NW Auburn, WA 98001
Tel. (800) 700-7228 Fax (253) 833-7268 Web NuRayMetals.com

NRM-1000 Concealed Fastener Panel



NRM-1000 FEATURES

- Excellent panel for architectural, commercial and industrial roof applications
- Narrow rib design
- Great load and span capacities
- Apply over open framing or solid substrates
- Long-length crating available
- Minimum 3:12 roof pitch
- UL 580 Class 90 Rated and Listed

PANEL DEPTH : 1 1/2"

PANEL WIDTHS : 12", 16" or 20"

PANEL LENGTHS: 3 ft. to 45 ft. standard

METAL OPTIONS

- 22, 24 and 26 gauge G90 or AZ50 steel
- .032 and .040 aluminum
- 16 oz. or 20 oz. natural copper
-

SURFACE OPTIONS

- Smooth/flat
- Two pencil ribs
- Striations
-

FINISHES

- D2 Kynar 500® ULTRA-Cool™
- D2 Kynar 500® with Ocean Guard ULTRA-Cool™
- Zinalume Plus*
- Standard Kynar 500® ULTRA-Cool™
-

Kynar® and Kynar 500® are registered trademarks of Arkema Inc. used under sublicense by Nu-Ray Metal Products, Inc.

24 GAUGE PANELS x 16" WIDE

Gauge	Span	Condition	2' 0" Span	2' 6" Span	3' 0" Span	3' 6" Span	4' 0" Span	4' 6" Span	5' 0" Span
24	Single	L/240	118	75	52	38	29	22	18
24	Double	L/240	118	75	52	38	29	22	18
24	Triple	L/240	136	87	60	44	33	26	16

24 GAUGE PANELS x 12" WIDE

Gauge	Span	Condition	2' 0" Span	2' 6" Span	3' 0" Span	3' 6" Span	4' 0" Span	4' 6" Span	5' 0" Span
24	Single	L/240	157	100	69	51	38	30	24
24	Double	L/240	157	100	69	51	38	30	24
24	Triple	L/240	181	116	80	59	45	35	28

All calculations for panel properties have been made in accordance with the 1996 edition of "Specification for Cold-Formed Steel Design Manual" published by the American Iron and Steel Institute. Material: FY = 40 KSI for steel panels minimum. All loads are in PSF. Minimum panel support bearing length = 3.00 in. Loads shown are limited by L/240 deflection.

Nu-Ray Metals
Steel Roofing & Siding Products

(800) 700-7225

www.NuRayMetals.com

Questions? Contact our Technical Department at
info@nuraymetals.com