

Color: Old Town Gray
Installer: Emerald City Roofing

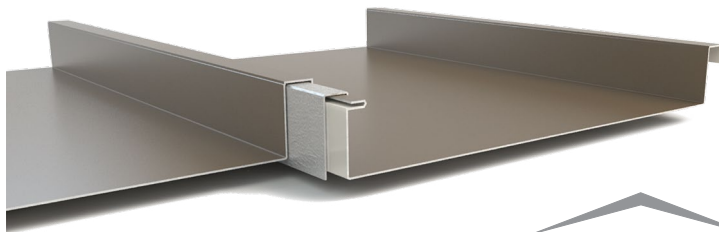
NRM-2000 PANELS • Mechanically Seamed

NRM-2000 panels are ideal for low-slope applications, combining structural panel performance with architectural panel aesthetics. Optional factory-applied seam sealant can be applied for additional weather resistance on low-slope applications. Maximum panel length is variable as Nu-Ray has the capability to form continuous panels on site for long roof sections. Maximum factory-formed panel length is 58' 0". Minimum panel length is 1' 0".

NRM-2000 features 1½" leg height that requires mechanical field seaming after installation. The panel employs a concealed-fastener floating clip system that allows thermal expansion/contraction.

FASTENERS

For roofing applications, use wood-type screws fastened on 24"-36" centers. Other screw types are available applications over structural steel and steel decking.



TRIM

All flashing and trim shall be fabricated by Nu-Ray Metals or a qualified fabricator. Flashings for this panel shall be 26 or 24 gauge steel.

INSTALLATION

NRM-2000 panels are intended for use in architectural and structural roofing. Substrates include 5/8" plywood, nailboard insulation or equivalent, with an underlayment of 30# roofing felt applied horizontally from eave to ridge. Other substrates may include metal decking, purlins or rigid insulation in conjunction with bearing plates. Minimum roof pitch is ½:12.

HANDLING

Vinyl masking is provided on all steel sheet to help protect materials where extra handling is expected.

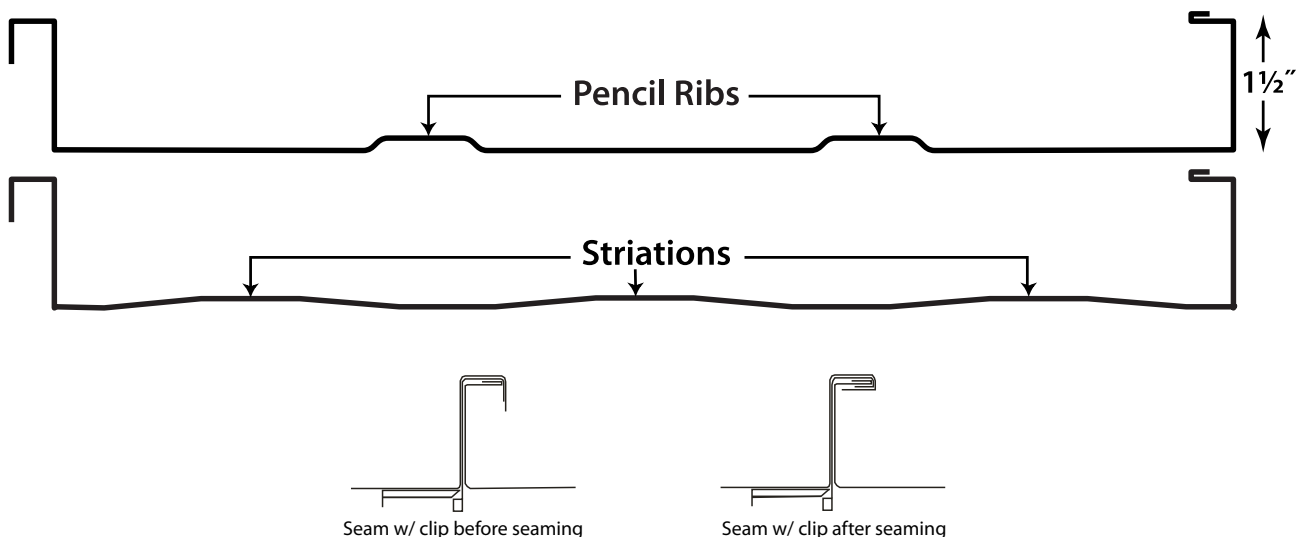
WARRANTY

A 40-year non-prorated finish warranty can be supplied covering finish performance.

Nu-Ray Metals
Steel Roofing & Siding Products

Nu-Ray Metal Products, Inc. 1234 37th Street NW Auburn, WA 98001
Tel. (800) 700-7228 Fax (253) 833-7268 Web NuRayMetals.com

NRM-2000 Mechanically Seamed Panel



NRM-2000 FEATURES

- Superb panel for architectural, commercial and industrial roof applications
- Factory-injected seam sealant available as an option
- Great load and span capacities
- Apply over open framing or solid substrates
- On site forming available
- Minimum 1/2:12 roof pitch
- UL 580 Class 90 Rated and Listed

PANEL DEPTH : 1 1/2"

PANEL WIDTHS : 12", 16", or 20"

PANEL LENGTHS: 5 ft. to 45 ft. standard

METAL OPTIONS

- 22, 24 and 26 gauge G90 or AZ50 steel
- .032 and .040 aluminum
- 16 oz. or 20 oz. natural copper

SURFACE OPTIONS

- Smooth/flat
- Two outside rib clips
- Striations

FINISHES

- D2 Kynar 500® ULTRA-Cool™
- D2 Kynar 500® with Ocean Guard ULTRA-Cool™
- Zinalume Plus*
- Standard Kynar 500® ULTRA-Cool™

Kynar® and Kynar 500® are registered trademarks of Arkema Inc. used under sublicense by Nu-Ray Metal Products, Inc.

24 GAUGE PANELS x 16" WIDE

Gauge	Span	Condition	4' 0" Span	4' 6" Span	5' 0" Span	5' 6" Span	6' 0" Span	6' 6" Span	7' 0" Span
24	Single	L/240	116	81	59	44	34	27	21
24	Double	L/240	116	81	59	44	34	27	21
24	Triple	L/240	91	63	46	34	26	21	16

24 GAUGE PANELS x 12" WIDE

Gauge	Span	Condition	4' 0" Span	4' 6" Span	5' 0" Span	5' 6" Span	6' 0" Span	6' 6" Span	7' 0" Span
24	Single	L/240	154	108	79	59	45	36	28
24	Double	L/240	154	108	79	59	45	36	28
24	Triple	L/240	121	85	61	46	35	27	22

All calculations for panel properties have been made in accordance with the 1996 edition of "Specification for Cold-Formed Steel Design Manual" published by the American Iron and Steel Institute. Material: FY = 40 KSI for steel panels minimum. All loads are in PSF. Minimum panel support bearing length = 3.00 in. Loads shown are limited by L/240 deflection.



(800) 700-7225

www.NuRayMetals.com

Questions? Contact our Technical Department at info@nuraymetals.com