



Color: Charcoal Gray/Desert Tan
Architect: GONzales Design Partners
Installer: Silvershield Roofing

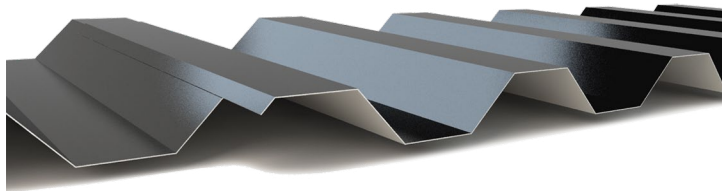
NRM-7000 PANELS • Industrial 7.2 Panel

NRM-7000 offers design flexibility in an architecturally attractive metal panel. This versatile 7.2 panel can be specified for a wide range of building envelope applications including roofs, walls, linear panels, walls and equipment screens.

NRM-7000 panels can be produced perforated and used for projects such as equipment and shade screens. Perforated panels are also excellent for interior acoustical applications as well. They are available factory roll-formed in a maximum panel length of 50' 0" and a minimum length of 1' 0".

FASTENERS

For roofing applications, use wood-type screws fastened on 18" centers. Other screw types are available applications over structural steel and steel decking.



TRIM

All flashing and trim shall be fabricated by Nu-Ray Metals or a qualified fabricator. Flashings for this panel shall be 20, 22, 24 or 26 gauge steel.

INSTALLATION

For roofing applications, Nu-Ray's 7000 panels shall be installed over solid decking ($\frac{5}{8}$ " plywood, nailboard insulation or equivalent, with an underlayment of 30# roofing felt applied horizontally from eave to ridge.) Panels shall be fastened on 18" centers (max.). Minimum roof pitch is 3:12.

HANDLING

Vinyl masking is provided on all steel sheet to help protect materials where extra handling is expected.

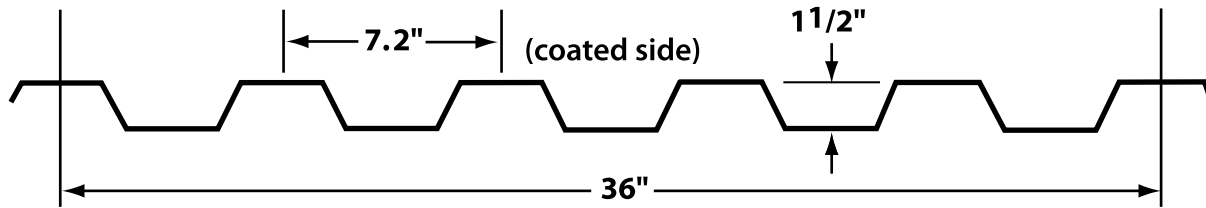
WARRANTY

A 40-year non-prorated finish warranty can be supplied covering finish performance.


Nu-Ray Metals
Steel Roofing & Siding Products

Nu-Ray Metal Products, Inc. 1234 37th Street NW Auburn, WA 98001
Tel. (800) 700-7228 Fax (253) 833-7268 Web NuRayMetals.com

NRM-7000 Exposed Fastener Panel



NRM-7000 FEATURES

- Great panel for architectural, commercial and industrial roof and wall applications
- Standard 7.2" span between major ribs
- Great load and span capacities
- Apply over open framing or solid substrates
- Export crating available
- Minimum 3:12 roof pitch
-

PANEL DEPTH : 1 1/2"

PANEL COVER WIDTH : 36"

PANEL LENGTHS: 5 ft. to 45 ft. standard

METAL OPTIONS

- 20, 22, 24 and 26 gauge G90 or AZ50 steel
- .032, .040 and .050 aluminum
- 16 oz. or 20 oz. natural copper

SURFACE OPTIONS

- Standard as shown in the cross-section above

FINISHES

- D2 Kynar 500® ULTRA-Cool™
- D2 Kynar 500® with Ocean Guard ULTRA-Cool™
- Zinalume Plus*
- Standard Kynar 500® ULTRA-Cool™

Kynar® and Kynar 500® are registered trademarks of Arkema Inc. used under sublicense by Nu-Ray Metal Products, Inc.

22 GAUGE PANELS x 36" WIDE

| Gauge | Span | Condition | 2' 0" Span | 2' 6" Span | 3' 0" Span | 3' 6" Span | 4' 0" Span | 4' 6" Span | 5' 0" Span |
|-------|--------|-----------|------------|------------|------------|------------|------------|------------|------------|
| 22 | Single | L/240 | 1092 | 323 | 203 | 136 | 95 | 69 | 40 |
| 22 | Double | L/240 | 2664 | 789 | 497 | 333 | 233 | 170 | 98 |
| 22 | Triple | L/240 | 2087 | 618 | 389 | 260 | 183 | 133 | 77 |

24 GAUGE PANELS x 36" WIDE

| Gauge | Span | Condition | 2' 0" Span | 2' 6" Span | 3' 0" Span | 3' 6" Span | 4' 0" Span | 4' 6" Span | 5' 0" Span |
|-------|--------|-----------|------------|------------|------------|------------|------------|------------|------------|
| 24 | Single | L/240 | 794 | 235 | 148 | 99 | 69 | 50 | 29 |
| 24 | Double | L/240 | 1914 | 567 | 357 | 239 | 168 | 122 | 70 |
| 24 | Triple | L/240 | 1499 | 444 | 279 | 187 | 131 | 95 | 55 |

All calculations for panel properties have been made in accordance with the 1996 edition of "Specification for Cold-Formed Steel Design Manual" published by the American Iron and Steel Institute. Material: FY = 40 KSI for steel panels minimum. All loads are in PSF. Minimum panel support bearing length = 3.00 in. Loads shown are limited by L/240 deflection.


Nu-Ray Metals
Steel Roofing & Siding Products

(800) 700-7225

www.NuRayMetals.com

Questions? Contact our Technical Department at
info@nuraymetals.com